



**Molecular DNA identification of blood sources fed on, for
Culicine mosquitoes (Diptera: Culicidae) collected in the
Songkhla province, southern Thailand**

Journal:	<i>Songklanakarin Journal of Science and Technology</i>
Manuscript ID	SJST-2016-0218.R1
Manuscript Type:	Original Article
Date Submitted by the Author:	29-Aug-2016
Complete List of Authors:	Pongsakul, Theerakamol; Prince of Songkla University, Sudsom, Napadol ; Nan Provincial Public Health Office, Mueang Nan, Nan 55000, Thailand Foakes, Gregory ; Departments of Epidemiology and Mathematics, University of Michigan, Ann Arbor, MI 48109, USA Bhatt , Kartik ; Departments of Epidemiology and Mathematics, University of Michigan, Ann Arbor, MI 48109, USA Eisenberg, Marisa ; Departments of Epidemiology and Mathematics, University of Michigan, Ann Arbor, MI 48109, USA
Keyword:	Cytochrome b gene, Multiplex PCR, Aedes spp., Culex spp., Blood meal

SCHOLARONE™
Manuscripts

Title: Molecular DNA identification of blood sources fed on, for Culicine mosquitoes (Diptera: Culicidae) collected in the Songkhla province, southern Thailand

Authors: Theerakamol Pongsakul^{1*}, Napadol Sudsom², Gregory Foakes³, Kartik Bhatt³, Marisa Eisenberg³ and Padet Siriyasatien^{4,5}

* Corresponding author (theerakamol.p@psu.ac.th)

Institution:

1 Faculty of Medical Technology, Prince of Songkla University, Hat Yai, Songkhla 90110, Thailand

2 Nan Provincial Public Health Office, Mueang Nan, Nan 55000, Thailand

3 Departments of Epidemiology and Mathematics, University of Michigan, Ann Arbor, MI 48109, USA

4 Department of Parasitology, Faculty of Medicine, Chulalongkorn University, Bangkok, Thailand

5 Excellence Center for Emerging Infectious Diseases, King Chulalongkorn Memorial Hospital, Thai Red Cross Society, Bangkok, Thailand

Abstract:

Culicine mosquitoes are medically important vectors. Therefore, mosquito control measures are a crucial strategy to interrupt disease transmission. Collection of data on mosquito feeding patterns is crucial for developing an effective vector control strategy. The objective of this study was to use molecular biology methods to identify the sources of DNA in mosquito blood meals. The DNA from blood meals in the mosquito stomachs was extracted and amplified with multiplex PCR, using specific primer sets based on the mitochondrial cytochrome *b* gene, to identify the DNA sources among human, pig, goat, dog, cow, and chicken. Among the 297 mosquito samples collected in the Songkhla province of Thailand, in *Aedes* spp. mosquitoes the percentages positive for human, dog, pig, chicken, cow, a mixture of 2 vertebrate DNAs, or of 3, and negative (no identified DNA) were 61.90, 2.38, 2.38, 0.60, 0.60, 4.18, 1.20 and 26.79% respectively. In *Culex* spp. blood meals the rank order was different: fractions positive for chicken, human, dog, cow, goat, pig, a mixture of 2 or 3 vertebrate DNAs, and negative were 40.83, 10.00, 5.00, 4.17, 1.67, 0.83, 8.32, 3.32 and 25.83% respectively. This study shows that feeding behaviors of the two species differ, with most *Aedes* spp. blood meals containing human blood, while *Culex* spp. had primarily consumed chicken blood. An improved understanding of the feeding behaviors of mosquitoes could contribute to new, more effective strategies for the control of mosquito populations.

Keywords: Cytochrome b gene, Multiplex PCR, *Aedes* spp., *Culex* spp., Blood meal

Introduction

Over 3,450 species of mosquitoes have been identified globally, and 412 species among these have been described in Thailand (Chansang *et al.*, 1997). The majority of mosquitoes are found in tropical areas. Only female mosquitoes feed on blood, necessary for the development of their eggs. The mosquito species may differ in their blood feeding patterns and host preferences (Busula *et al.*, 2015). On the other hand, the feeding patterns affect the transmission of vector borne diseases between humans and animals, in turn affecting the prevalence and spreading of diseases in humans.

The dynamics of a mosquito population is dependent on a variety of factors such as rainfall, geography, and human behavior. In the rainy season, the population of mosquitoes is high (Barrera *et al.*, 2011). In addition, multiple animal hosts may contribute to the maintenance and growth of mosquito populations in certain areas. The feeding behaviors of mosquitoes that feed on blood have thus received increasing attention in epidemiological research. In 2009, Watts *et al.* determined various types of mosquito blood meals in Florida, USA, by using DNA sequencing (Watts *et al.*, 2009). They found that the mosquitoes had fed on many types of animals, such as horses, cows, armadillos, deer, raccoons, rabbits and owls; but mostly preferred mammalian blood.

Immunological assays such as agar gel diffusion (Sahu, 1998), capillary precipitin test (Tempelis, 1975), and Enzyme-Linked Immunosorbent Assay (ELISA) (Chow *et al.*, 1993; Hunter and Bayly, 1991; Beier *et al.*, 1988), have been used to identify mosquito blood meals. While immunological techniques have been widely used, they cannot distinguish all types of mosquito blood meals because of cross-reactivity confusing serum proteins from

1
2
3 closely related species (Siriyasatien *et al.*, 2010). Thus, immunological techniques are often
4
5 used to identify sources of mosquito blood meals only up to the family or the order (Ngo and
6
7 Kramer, 2003; Santiago-Alarcon *et al.*, 2012). By contrast, polymerase chain reaction (PCR)
8
9 can be used to classify the DNA found in mosquito blood meals with high accuracy of
10
11 determining the species (Kent and Norris, 2005). At present, there are many types of PCR-
12
13 based analyses, such as conventional PCR, allele-specific PCR (ASPCR), nested PCR, and
14
15 multiplex PCR (Siriyasatien *et al.*, 2010; Kent and Norris, 2005). Multiplex PCR is
16
17 convenient as it directly identifies the DNA, providing speed and cost-effectiveness to blood
18
19 meal identification (Lee *et al.*, 2002). The cytochrome *b* gene acts in the electron transport
20
21 chain processes of mitochondria, has an overall DNA length around 1140 bp, and can be
22
23 found in all animals. This gene has distinct characteristics for each species, making it an ideal
24
25 choice for identifying the blood meal sources (Jain *et al.*, 2007). In this study we used
26
27 multiplex PCR to identify mosquito blood meal sources from the cytochrome *b* genes.
28
29
30

31
32 Thailand is located in Southeast Asia, and southern Thailand has a tropical monsoon
33
34 climate. This area has rainfall throughout the year and contains the highest annual rainfall
35
36 regions of the country (Chufamanee and Lønholdt, 2001; Trisurat *et al.*, 2016), making it a
37
38 favorable area to the mosquitos. Thus the current study focused on Songkhla province in
39
40 southern Thailand as the study area.
41
42

43 In this study, we collected Culicine mosquitoes in Songkla province, to study the
44
45 blood feeding behavior of mosquitoes in this target area. We selected only female mosquitoes
46
47 with blood in the stomach, and then extracted DNA from that blood. We then identified the
48
49 blood meal sources using PCR with primers specific to human, pig, goat, dog, cow, and
50
51 chicken. The results may facilitate designing mosquito control strategies locally, and inform
52
53
54

1
2
3 about the blood feeding behaviors of the mosquitoes. Moreover, knowledge of the mosquito
4 feeding targets may lead to better interventions of vector borne diseases, particularly their
5 transmission between animals and humans. While the study contributes to the local control of
6 mosquito borne diseases, its results and methods may have wider generality and applicability.
7
8
9
10

11 12 13 14 **Materials and Methods**

15 16 **Mosquito collection**

17
18 Female Culicinea mosquitoes (*Ae. aegypti*, *Ae. albopictus*, *Culex* spp. and *Mansonia*
19 spp.) were collected from 16 districts (Mueang Songkhla, Sathing Phra, Chana, Na Thawi,
20 Thepha, Saba Yoi, Ranot, Krasae Sin, Sadao, Na Mom, Khuan Niang, Bang Klam,
21 Singhanakhon, Khlong Hoi Khong, Rattaphum, and Hat Yai) of the Songkhla province by
22 using a hand-held net based on the WHO (2003) guidelines, in the living areas from house to
23 house and not collect in one place for more than 15 to 20 minutes. The time of collection is
24 06:00-18:00 during March to December 2014. After identification, the mosquitoes were
25 stored in Cryo-tubes in liquid nitrogen until use.
26
27
28
29
30
31
32
33
34
35

36 **DNA extraction**

37
38 DNA from each blood sample was extracted using an E.Z.N.A. Tissue DNA Kit
39 (OMEGA Biotek, USA) following the manufacturer's instructions, and was kept at -20 °C
40 until use. The DNA was amplified using multiplex PCR, and then the PCR product was used
41 to identify specific vertebrate DNAs in the mosquito blood meal by using a primer set
42 specific for human (Human741F: 5' ggcttactctcttcattctctct 3'), pig (Pig573F: 5'
43 cctcgcagccgtagatctt 3'), goat (Goat894F: 5' cctaacttagtactgtaccattctc 3'), dog (Dog368F: 5'
44
45
46
47
48
49
50
51
52
53
54
55
56
57
58
59
60

1
2
3 ggaattgtactattattcgcaacat 3'), cow (Cow121F: 5' catcggcacaaatttagtcg 3'), and chicken
4
5 (Chick1123R: 5' gaagaggataagtaggatggatgaag 3'), with agarose gel electrophoresis.
6
7

8 9 10 **Multiplex PCR**

11
12 Multiplex PCR was used to amplify the DNA with a mixture of group-specific
13
14 primers based on the mitochondrial cytochrome *b* gene, to identify the DNA of six blood
15
16 hosts: human (Human741F), pig (Pig573F), goat (Goat894F), dog (Dog368F), cow
17
18 (Cow121F), and chicken (Chick1123R) as described previously (Siriyasatien *et al.*, 2010;
19
20 Kent and Norris, 2005). This alternative multiplexed PCR generated a control product with
21
22 UnRev1025A (5' ggtgtcctccaattcatgtta 3') and UnFor403 (5' tgaggacaaatcattctgagg 3') for
23
24 all six species, and chicken-specific product produced by UnFor1029 (5'
25
26 taacctgaatcggaagccaacc 3'). The PCR products were electrophoresed in 2% agarose gel at 100
27
28 volts, stained with ethidium bromide (0.5 µg/ml) and visualized using a Uvitec UVIDoc HD2
29
30 (UVITEC Cambridge, UK).
31
32
33

34
35 Each PCR amplification reaction was done in a final volume of 25 µl, containing 9.5
36
37 µl double-distilled water, 12.5 µl My TaqHs Red Mix buffered (Bioline, USA), 1 µl primer
38
39 (20µM of each primer: the mixed primer consisted of 0.125 µl each of Human741F, Pig573F,
40
41 Goat894F, Dog368F, Cow121F, Chick1123R, UnFor1029 and UnRev1025A), and 2 µl
42
43 template (DNA extract). The PCR amplification steps included initial denaturation at 95° C
44
45 for 5 min, followed by 35 cycles of 1 min denaturation at 95 °C, 1 min annealing at 58 °C
46
47 and 1 min extension at 72°C, and a final elongation step at 72°C for 7 min. After
48
49 amplification, 10 µl of the PCR product was analyzed by electrophoresis on a 2% agarose gel
50
51 containing 0.5 µg/ml ethidium bromide.
52
53
54

Host feeding pattern analysis

The blood meal results from 2% agarose gel electrophoresis were labeled by the host sources of DNA in the blood meal, and also the mosquito species was recorded for each sample. These data were used to determine the blood feeding patterns of the collected Culicine mosquitoes.

Results

Mosquito collection

A total of 1,366 adult Culicine mosquitoes were collected, and 297 samples of mosquito blood meals were collected, with 4 genres represented: 168 of 2 *Aedes* spp. (96 of *Ae. aegypti* and 72 of *Ae. albopictus*), 120 of 9 *Culex* spp. (60 of *Cx. quinquefasciatus*, 18 of *Cx. hutchinsoni*, 5 of *Cx. tritaeniorhynchus*, 6 of *Cx. papuensis*, 10 of *Cx. malayi*, 12 of *Cx. fuscocephala*, 3 of *Cx. gelidus*, 5 of *Cx. termi* and 1 of *Cx. foliates*), 7 of *Armigeres subalbatus* and 2 of *Mansonia* spp. (unidentified species).

DNA analysis

Among the 297 blood samples, 214 (72.1%) were positive for at least one of the host DNAs tested for, and 83 (27.9%) of the samples were negative (Figure 1). Among the 83 negative samples, 68 (22.9%) were positive for some other (not one of the tested for hosts) mammalian DNA and 15 (5.1%) of the samples were negative (Figure 2).

In a total of 168 *Aedes* spp. blood meals, comprising 123 (73.2%), 62 (36.9%) of *Ae. albopictus* and 61 (36.3%) of *Ae. aegypti*, were positive for at least one of the hosts tested for human, dog, pig, chicken, cow, mixture of 2 host DNAs, and mixture of 3 host DNAs, at

1
2
3 61.9, 2.4, 2.4, 0.6, 0.6, 4.2, and 1.2%, respectively, and 45 (26.8%) of the samples were
4
5 negative (Figure 3).
6

7
8 In a total of 120 *Culex* spp. blood meals, comprising 89 (74.2%), 42 (35%) of *Cx.*
9
10 *quinquefasciatus*, 15 (12.5%) of *Cx. hutchinsoni*, 11 (9.17%) of *Cx. fuscocephala*, 5 (4.2%)
11
12 of *Cx. malayi*, 5 (4.2%) of *Cx. termi*, 4 (3.3%) of *Cx. tritaeniorhynchus*, 4 (3.3%) of *Cx.*
13
14 *papuensis* and 3 (2.5%) of *Cx. gelidus*, were positive for at least one of the hosts tested for
15
16 chicken, human, dog, cow, goat, pig, mixture of 2 host DNAs, and mixture of 3 host DNAs,
17
18 at 40.83, 10.00, 5.00, 4.17, 1.67, 0.83, 8.32 and 3.32%, respectively, and 31 (25.8%) of the
19
20 samples were negative (Figure 4).
21
22

23 These results show that the *Aedes* spp. mosquitoes tend to prefer human blood, while
24
25 the *Culex* spp. mosquitoes prefer chicken blood. This information helps to understand the
26
27 mosquito feeding behavior, and can facilitate the development of strategies to control the
28
29 mosquito population.
30
31

32 33 34 Discussion

35
36 We collected two *Mansonia* spp. and seven *Armigeres* spp. mosquitoes; these are very
37
38 small sample sizes and do not warrant analysis. So we focused on the blood meal DNA in
39
40 *Aedes* spp. and *Culex* spp. that had much larger sample sizes, and the host animals of blood
41
42 meals were different between these two genres. The *Aedes* spp. sample consisted of two
43
44 species, *Ae. aegypti* and *Ae. albopictus*, both of which primarily fed on humans, followed by
45
46 dogs and pigs in the order of apparent preference. Moreover, we found blood from more than
47
48 one type of host in one mosquito. These results can be assessed against a prior study at
49
50 Bernalillo, New Mexico, USA (Greenberg *et al.*, 2013). They found that 96.7% of *Ae. vexans*
51
52
53
54

1
2
3 mosquitoes preferred mammalian blood. In 1993, they reported that in the northern parts of
4
5 America, 64% of the *Ae. albopictus* blood meals contained mammalian blood (Savage *et al.*,
6
7 1993). In Thailand, another study showed that most of the *Ae. aegypti* blood meals in 2001 at
8
9 Chachoengsao province contained human blood (Harrington *et al.*, 2001). These studies
10
11 along with the current results support that the *Aedes* spp. mosquito primarily feeds on
12
13 mammalian blood, mainly human blood.
14
15

16
17 *Aedes* spp. mosquitoes are the viral vector for many viruses, including Dengue virus
18
19 (Failloux *et al.*, 2002), Yellow fever virus (Briscoe, 1962), Chikungunya virus (Zinser *et al.*,
20
21 2004), and Zika virus (Olson and Ksiazek, 1981). This study suggests that since *Aedes* spp.
22
23 tends to feed on human blood, it is more likely to spread vector borne diseases in regions with
24
25 high population density of humans.
26

27
28 For *Culex* spp. in this study, we found 8 species, namely *Cx. quinquefasciatus*,
29
30 *Cx. hutchinsoni*, *Cx. tritaeniorhynchus*, *Cx. papuensis*, *Cx. malayi*, *Cx. fuscocephala*, *Cx.*
31
32 *gelidus*, and *Cx. termi*. These eight species of *Culex* spp. had mainly fed on chicken blood,
33
34 with human and dog following in the rank order. These results differ from a prior study in
35
36 Arizona, USA (Zinser *et al.*, 2004), which found that *Cx. quinquefasciatus* mostly prefers
37
38 human blood (50%) followed by bird blood (32%). On the other hand, several studies also
39
40 support the findings of our study, indicating that *Culex* spp. mostly feeds on avian blood. A
41
42 1990 study in California, USA, found that 99% of *Culex* spp. blood meals contained avian
43
44 blood (Reisen *et al.*, 1990), and a 1988 study in North Carolina, USA, reported the main
45
46 target host of *Culex* spp. as birds (Irby and Apperson, 1988).
47
48

49
50 The environment is an important factor affecting the blood feeding behavior of
51
52 mosquitoes. In a 1992 study of *Culex* spp. blood meals, urban and forest areas were compared
53
54

1
2
3 (Niebylski and Meek, 1992). The study found that the main feeding target in urban areas is
4 dogs followed by birds and humans, while the main feeding target in forests is birds,
5 followed by dogs and humans. In light of these supporting results, we suggest that *Culex* spp.
6 prefers avian blood followed by mammalian blood, but the results will differ depending on
7 which animals are available in the surrounding areas. *Culex* spp. in Songkhla province
8 preferred chicken blood from the avian group. Further, it is unclear to which degree this
9 preference simply reflects the density or availability of particular species of hosts, rather than
10 the intrinsic preferences or attraction to one species over another.
11
12
13
14
15
16
17
18
19

20
21 *Culex* spp. is an important vector that carries diseases to human, from animals or other
22 humans, the diseases including Japanese encephalitis virus (Takahashi, 1976) and Filariasis
23 (*Wuchereria bancrofti*) (Omori, 1962). Since the feeding behavior of *Culex* spp. mosquitoes
24 includes both humans and other hosts, not only are they a major culprit spreading vector
25 borne diseases, but they may also play a role in conserving the pathogen in animal species as
26 reservoirs, causing periodic re-emergence of infectious diseases in humans.
27
28
29
30
31
32
33

34 Mosquito blood meals were examined by multiplex PCR, using specific primers for
35 cytochrome *b* gene, distinguishing between human, pig, goat, dog, cow, and chicken. In the
36 cases where the host source of a blood meal was not identified, this failure can be attributed
37 to the limited set of primers used.
38
39
40
41
42
43
44

45 **Conclusions**

46
47 Our study has provided blood feeding pattern of Culicine mosquitoes collected in the
48 Songkhla province. As a result, the mosquitoes are able to feed on blood from multiple
49 sources. This allows a disease to continue circulating in the mosquitoes and the environment,
50
51
52
53
54

1
2
3 emerging repeatedly in humans. Thus, new vector control interventions must also focus on
4
5 preventing other animal species from being bitten by mosquitoes. Additionally, the primers
6
7 could be selected to cover a broader range of animal hosts, and this could be addressed in
8
9 further studies.
10

11 12 13 14 15 16 17 **Acknowledgements**

18
19 We thank the students, scientists, and laboratory staff at the Faculty of Medical
20
21 Technology at the Prince of Songkla University, whose facilities provided the scientific and
22
23 chemical instruments and equipment needed. The authors are grateful to Miss Nannapat
24
25 Pruphetkaew, Epidemiology Unit, Faculty of Medicine, Prince of Songkla University, Hatyai,
26
27 Songkhla, Thailand, for her suggestions and for plotting the graphs. We also sincerely thank
28
29 Assoc. Prof. Dr. Seppo Karrila for improving the use of English and giving an idea in the
30
31 manuscript. This research was supported by the Prince of Songkla University, contract No.
32
33 MET570270S.
34
35
36
37
38

39 **References**

- 40
41 Barrera, R., Amador, M. and MacKay, A.J. 2011. Population dynamics of *Aedes aegypti* and
42
43 dengue as influenced by weather and human behavior in San Juan, Puerto Rico. PLOS
44
45 Neglected Tropical Diseases. 5(12), 1378.
46
47
48 Beier, J.C., Perkins, P.V., Wirtz, R.A., Koros, J., Diggs, D., Gargan, T.P. and Koech, D.K.
49
50 1988. Bloodmeal Identification by Direct Enzyme-Linked Immunosorbent Assay
51
52
53
54

- (ELISA), Tested on Diptera: Culicidae in Kenya. *Journal of Medical Entomology*. 25(1), 9-16.
- Briscoe, M.S. 1962. *Aedes aegypti* the Yellow Fever Mosquito, Its Life History, Bionomics and Structure. *Journal of the National Medical Association*. 54(1), 132.
- Busula, A.O., Takken, W., Loy, D.E., Hahn, B.H., Mukabana, W.R. and Verhulst, N.O. 2015. Mosquito host preferences affect their response to synthetic and natural odour blends. *Malaria Journal*. 28(14), 133.
- Chansang, U., Chansang, C., Benjaphong, N. and Tipyasook, S. 1997. Identification of the Mosquito Vectors in Thailand by Using Computer Program. *Journal of Health Science*. 6 (3), 142-149.
- Chow, E., Wirtz, R.A. and Scott, T.W. 1993. Identification of blood meals in *Aedes aegypti* by antibody sandwich enzyme-linked immunosorbent assay. *Journal of the American Mosquito Control Association*. 9(2), 196-205.
- Chufamane, P. and Lønholdt, J. 2001. Application of integrated environmental management through the preparation of an environmental action programme: Case study from the Songkhla Lake Basin in southern Thailand. *Lakes and Reservoirs: Research and Management*. 6(4), 323-334.
- Failloux, A.B., Vazeille, M. and Rodhain, F. 2002. Geographic genetic variation in populations of the dengue virus vector *Aedes aegypti*. *Journal of Molecular Evolution*. 55 (6), 653-663.
- Greenberg, J.A., Lujan, D.A., DiMenna, M.A., Wearing, H.J. and Hofkin, B.V. 2013. Identification of Blood Meal Sources in *Aedes vexans* and *Culex quinquefasciatus* in Bernalillo County, New Mexico. *Journal of Insect Science*. 13, 75.

- 1
2
3 Harrington, L.C., Edman, J.D. and Scott, T.W. 2001. Why do female *Aedes aegypti* (Diptera:
4 Culicidae) feed preferentially and frequently on human blood? Journal of Medical
5 Entomology. 38(3), 411-422.
6
7
8
9
10 Hunter, F.F. and Bayly, R. 1991. ELISA for Identification of Blood Meal Source in Black
11 Flies (Diptera: Simuliidae). Journal of Medical Entomology. 28(4), 527-532.
12
13
14 Irby, W.S. and Apperson, C.S. 1988. Hosts of mosquitoes in the coastal plain of North
15 Carolina. Journal of Medical Entomology. 25(2), 85-93.
16
17
18
19 Jain, S., Brahmhatt, M.N., Rank, D.N., Joshi, C.G. and Solanki, J.V. 2007. Use of
20 cytochrome b gene variability in detecting meat species by multiplex PCR assay. The
21 Indian Journal of Animal Sciences. 77(9), 880-881.
22
23
24
25 Kent, R.J. and Norris, D.E. 2005. Identification of mammalian blood meals in mosquitoes by
26 a multiplexed polymerase chain reaction targeting cytochrome b. The American Journal
27 of Tropical Medicine and Hygiene. 73(2), 336-342.
28
29
30
31
32 Lee, J.H., Hassan, H., Hill, G., Cupp, E.W., Higazi, T.B., Mitchell, C.J., Godsey, M.S. Jr, and
33 Unnasch, T.R. 2002. Identification of mosquito avian-derived blood meals by
34 polymerase chain reaction-heteroduplex analysis. American Journal of Tropical
35 Medicine and Hygiene. 66(5), 599-604.
36
37
38
39
40
41 Ngo, K.A., and Kramer, L.D. 2003. Identification of Mosquito Bloodmeals Using
42 Polymerase Chain Reaction (PCR) With Order-Specific Primers. Journal of Medical
43 Entomology. 40(2), 215-222.
44
45
46
47
48 Niebylski, M.L. and Meek, C.L. 1992. Blood-feeding of *Culex* mosquitoes in an urban
49 environment. Journal of the American Mosquito Control Association. 8(2), 173-177.
50
51
52
53
54

- 1
2
3 Olson, J. and Ksiazek, T. 1981. Zika virus, a cause of fever in Central Java, Indonesia.
4
5 Transactions of the Royal Society of Tropical Medicine and Hygiene. 75(3), 389-393.
6
7 Omori, N. 1962. A review of the role of mosquitos in the transmission of Malayan and
8
9 bancroftian filariasis in Japan. Bulletin of the World Health Organization. 27(4-5), 585-
10
11 594.
12
13
14 Reisen, W., Meyer, R., Tempelis, C. and Spoehel, J. 1990. Mosquito abundance and
15
16 bionomics in residential communities in Orange and Los Angeles Counties, California.
17
18 Journal of Medical Entomology. 27(3), 356-367.
19
20
21 Sahu, S.S. 1998. Comparative susceptibility of *Anopheles subpictus* from fresh and brackish
22
23 water areas to *Plasmodium falciparum* infection. Acta Tropica. 70 (1), 1-7.
24
25
26 Santiago-Alarcon, D., Palinauskas, V. and Schaefer, H.M. 2012. Diptera vectors of avian
27
28 Haemosporidian parasites: untangling parasite life cycles and their taxonomy.
29
30 Biological Reviews. 87(4), 928-964.
31
32
33 Savage, H., Niebylski, M., Smith, G., Mitchell, C. and Craig, G. 1993. Host-feeding patterns
34
35 of *Aedes albopictus* (Diptera: Culicidae) at a temperate North American site. Journal of
36
37 Medical Entomology. 30(1), 27-34.
38
39
40 Siriyasatien, P., Pengsakul, T., Kittichai, V., Phumee, A., Kaewsaitiam, S., Thavara, U.,
41
42 Tawatsin, A., Asavadachanukorn, P. and Mulla, M.S. 2010. Identification of blood
43
44 meal of field caught *Aedes aegypti* (L.) by multiplex PCR. The Southeast Asian journal
45
46 of tropical medicine and public health. 41(1), 43-47.
47
48
49 Takahashi, M. 1976. The effects of environmental and physiological conditions of *Culex*
50
51 *tritaeniorhynchus* on the pattern of transmission of Japanese encephalitis virus. Journal
52
53 of Medical Entomology. 13(3), 275-284.
54
55
56
57
58
59
60

1
2
3 Tempelis, C.H. 1975. Host-feeding patterns of mosquitoes, with a review of advances in
4
5 analysis of blood meals by serology. *Journal of Medical Entomology*. 11(6), 635-653.
6

7 Trisurat ,Y., Eawpanich, P. and Kalliola, R. 2016. Integrating land use and climate change
8
9 scenarios and models into assessment of forested watershed services in Southern
10
11 Thailand. *Environmental Research*. 147, 611-620.
12

13
14 Watts, S.L., Fitzpatrick, D.M. and Maruniak, J.E. 2009. Blood meal identification from
15
16 Florida mosquitoes (Diptera: Culicidae). *Florida Entomologist*. 92(4), 619-622.
17

18 WHO. 2003. *Guidelines for dengue surveillance and control*. 2nd Edition. Manila: World
19
20 Health Organization, Regional Office for the Western Pacific. 105 p.
21

22
23 Zinser, M., Ramberg, F. and Willott, E. 2004. *Culex quinquefasciatus* (Diptera: Culicidae) as
24
25 a potential West Nile virus vector in Tucson, Arizona: Blood meal analysis indicates
26
27 feeding on both humans and birds. *Journal of Insect Science*. 4, 20.
28
29
30
31
32
33
34
35
36
37
38
39
40
41
42
43
44
45
46
47
48
49
50
51
52
53
54

Figures

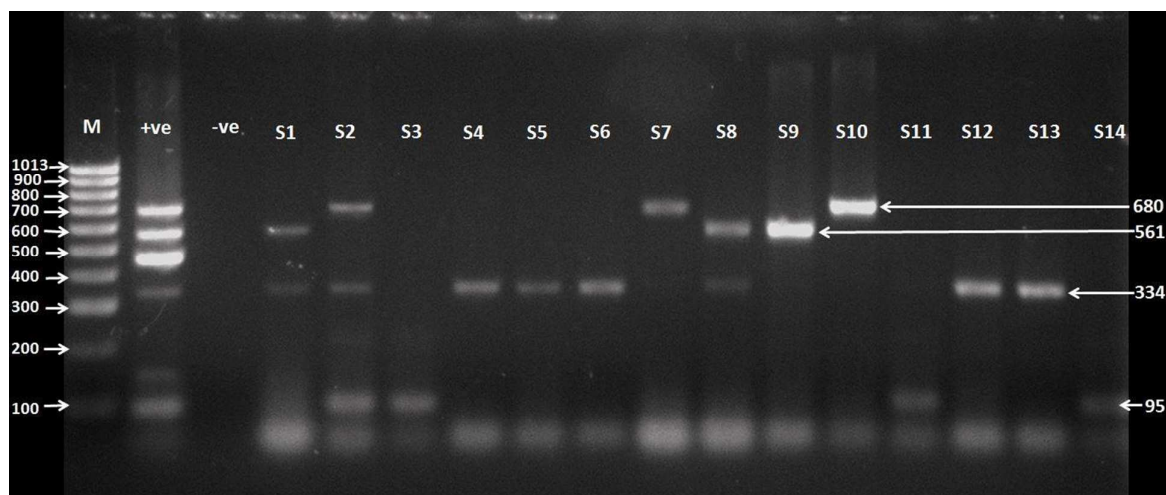


Figure 1. Ethidium bromide-stained agarose gel showing host specific cytochrome b polymerase chain reaction products, amplified from whole blood DNA extractions of blood recovered from Culicine mosquitoes that fed on it. Control products amplified from whole blood are shown in lanes S9 (cow, 561 bp) primer Cow121F, S10 (dog, 680 bp) primer Dog368F, S13 (human, 334 bp) primer Human741F, and S14 (chicken, 95 bp) primer Chick1123.

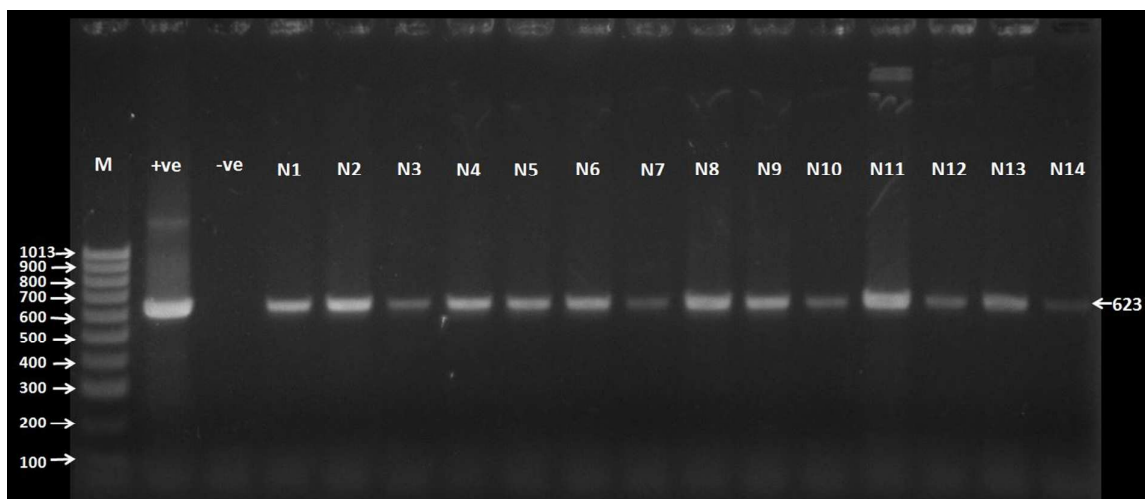


Figure 2. The alternative primers UnFor403 and UnRev1025A used in place of Human741F, Pig573F, Goat894F, Dog368F, Cow121F and Chick1123, show a 623-bp control band for all mammalian species. Lane M is for 100 bp Hyper leader, and lanes N1 to N14 are control bands.

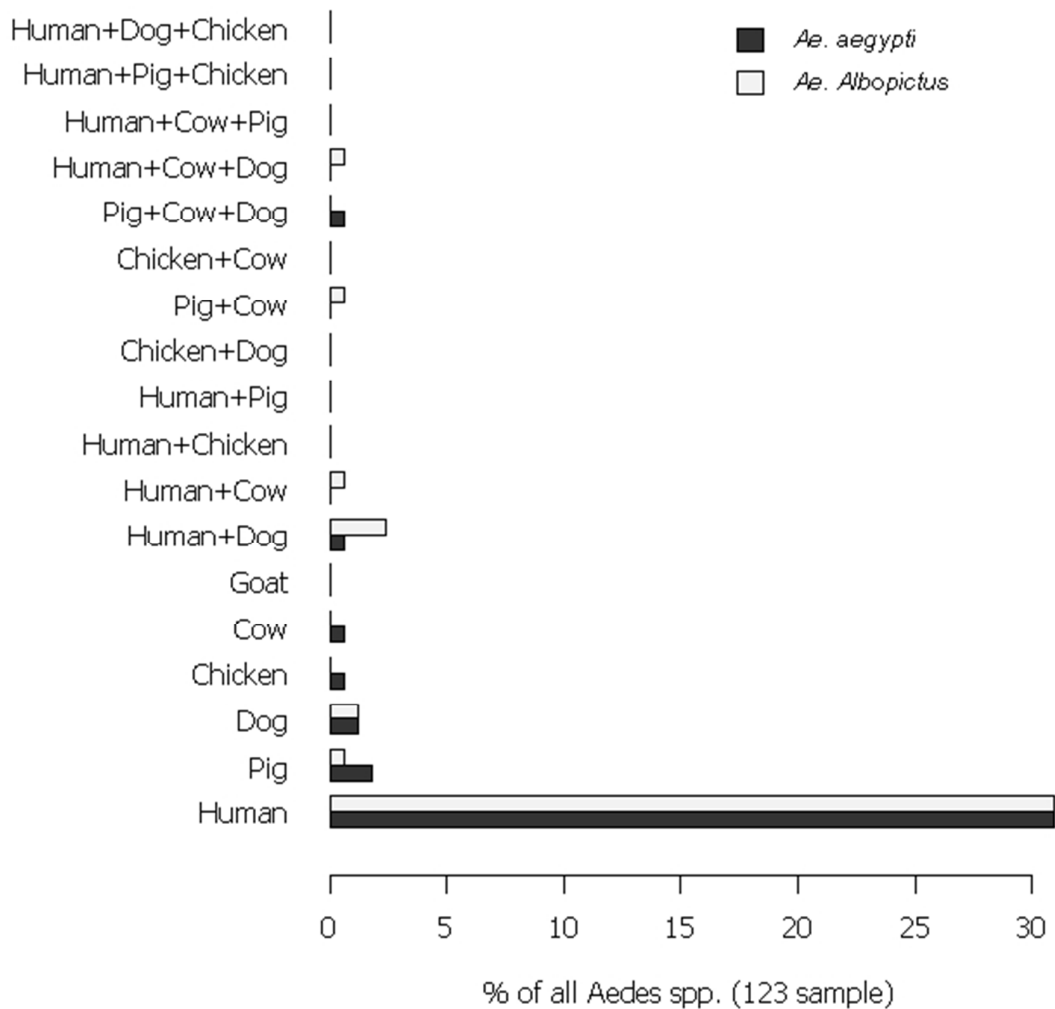
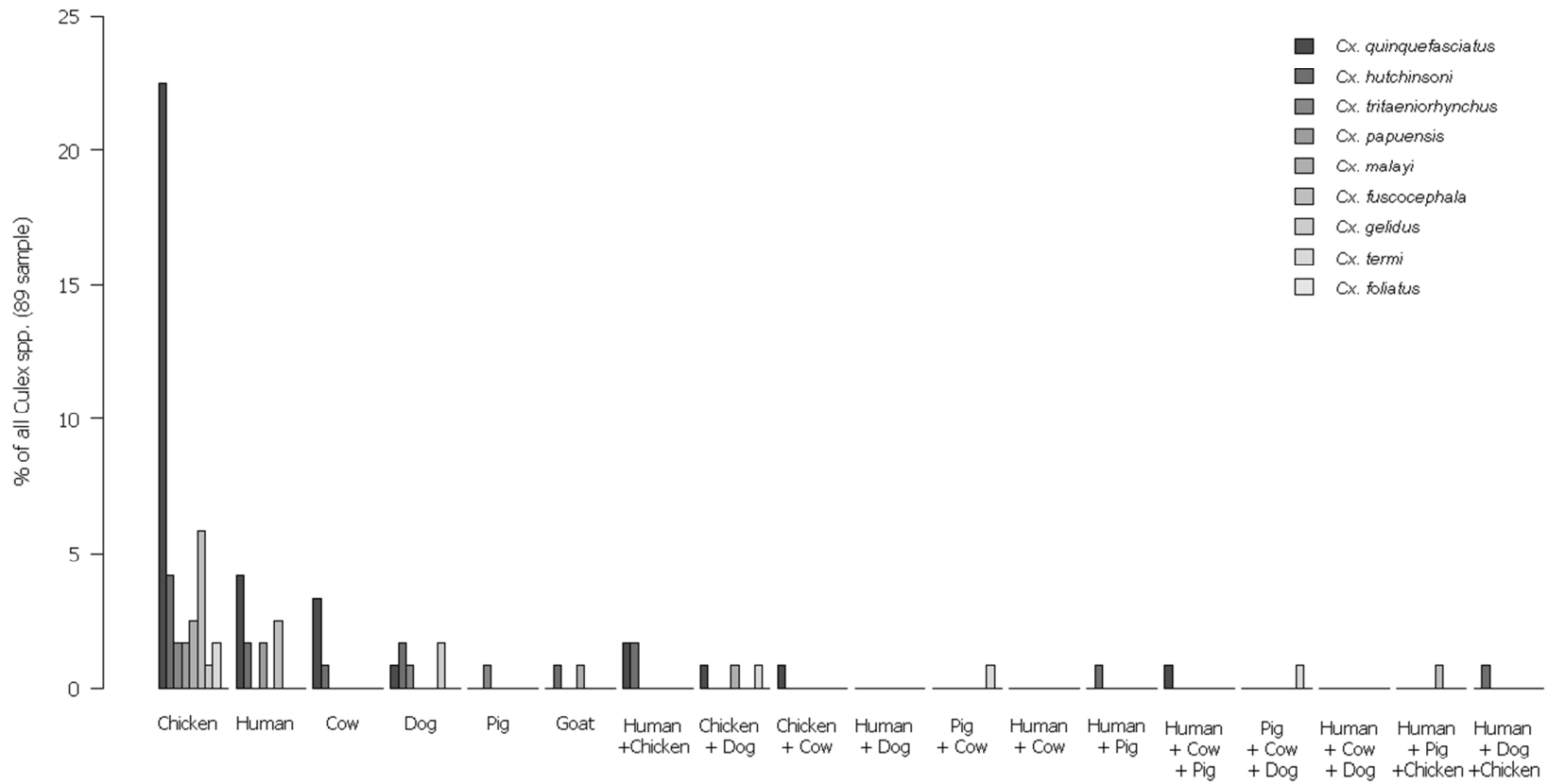


Figure 3. Comparison of blood feeding sources between *Ae. Albopictus* and *Ae. aegypti* mosquitoes.

1
2
3
4
5
6
7
8
9
10
11
12
13
14
15
16
17
18
19
20
21
22
23
24
25
26
27
28
29
30
31
32
33
34
35
36
37
38
39
40
41
42
43
44
45
46
47
48
49

For Review Only



1
2
3
4
5
6
7
8
9
10
11
12
13
14
15
16
17
18
19
20
21
22
23
24
25
26
27
28
29
30
31
32
33
34
35
36
37
38
39
40
41
42
43
44
45
46
47
48
49

Figure 4. Comparison of identified animal source for blood found in *Culex* spp mosquitoes.

For Review Only